

MEGASLAB<sup>®</sup>

# Stronger. Greener. No Compromise.

MEGASLAB guarantees stronger, more durable slabs with up to 50% fewer carbon emissions than ordinary concrete.



MEGASLAB is an engineered system that combines age-old processes with cutting-edge nanotechnologies and fibre blends to deliver jointless, industrial-grade concrete that is stronger and more durable – with up to 50% fewer carbon emissions.

---

## Why Choose MEGASLAB?



### Incredibly Flat Surface

MEGASLAB offers single panels as large as 200' x 200' with no control joints, and is the first solution in the US to offer jointless exterior concrete. When we do add joints, they are armored with a more abrasion-resistant surface and unmatched durability.



### Stronger & More Durable

Our proprietary mix design and process results in impressive strength gains, unmatched durability, and incredible finishing – even in harsh environments, for longer-lasting concrete.



### Reduced Thickness

Reduce concrete thickness up to 25% over ordinary reinforced concrete, depending on your requirements.



### Easy to Install

Fast install with no additional floor coatings or special finishing. Rack anchors can be easily installed without conflicting with steel rebar.



### 50% Lower Carbon Footprint

Our nanotechnology and mixture optimization with reduced cement and rebar reduces embodied carbon by up to 50% compared to ordinary mix designs, saving you money in GHG offset purchases.



### Low Risk

Experience reduced maintenance for facility and equipment and get up to a 5-year warranty on all applications – including heavy equipment and steel track usage.\*

\*5-year interior warranty, 3-year exterior warranty, and 3-year exterior warranty for use with heavy equipment are available.

**MEGASLAB®**

# The MEGASLAB Difference



**Higher structural capacity** than an ordinary 4,000 PSI slab with rebar reinforcement



Can produce a **+7,000 PSI compressive (ASTM C39) strength at 56 days** by optimizing a 4,000 PSI standard mix design



Flexural strengths (ASTM C78) are **40% to 100% higher** than ordinary mix designs



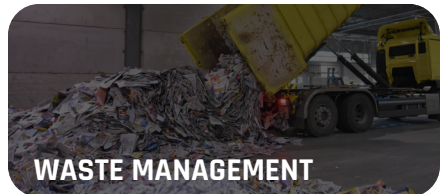
Maturity sensors placed in MEGASLAB show it **reaches strength much faster** than ordinary concrete mixes



Proprietary system reduces CO<sub>2</sub> emissions by **up to 50%**

---

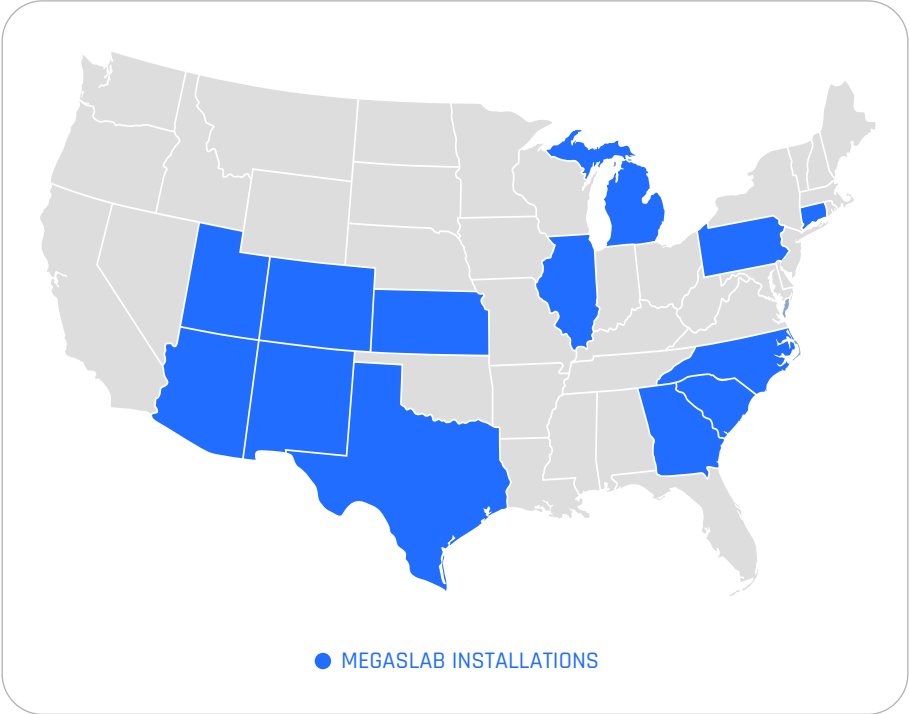
## Trusted by Tough Industries



# Who Uses MEGASLAB?

## SOME OF THE NATION'S LARGEST CORPORATIONS

MEGASLAB's proven system is on the ground in **14 states and counting** and is trusted by leading companies. Companies that want a better and more durable product that also reduces carbon emissions by up to 50%.



**Extraordinary Concrete for Extraordinary Clients**

**CATERPILLAR**

 **Nestlé**

**Walmart** 

**NUCOR**<sup>®</sup>

 **AFFINIUS**<sup>®</sup>  
CAPITAL

**Wolfspeed**<sup>®</sup> 

**MEGASLAB**<sup>®</sup>

# Paving the Way for a Stronger, Sustainable Tomorrow.



## Reduce Embodied Emissions

Because we significantly reduce cement content and rebar usage, our concrete produces up to 50% less embodied carbon emissions than ordinary concrete.



## Decrease Lifetime Emissions

MEGASLAB increases the durability and longevity of concrete by 2X, eliminating the need for carbon-intensive and costly repairs and maintenance and reducing the lifetime carbon footprint of the concrete.



## Prove Your CO<sub>2</sub> Reduction

Our detailed before-and-after reports demonstrate how much carbon you save in your concrete.



## Reduce Carbon Offset Costs

Use our reports in your carbon accounting to reduce the number of carbon offset credits you are required to purchase.



The savings you make from fewer slab repairs and replacements, equipment efficiency, and carbon offset purchases deliver a significant return on your investment in MEGASLAB – a win for you and the environment!

**“The type of machinery we have is so heavy, typical concrete would be destroyed by it. The MEGASLAB concrete on this facility is two years old and it looks as new as it did the day it went down.”**

**JOE ALLISON**

Facility Coordinator, Wagner Equipment Co



For more information, scan the  
QR code or visit [megaslab.com](https://www.megaslab.com)

**MEGASLAB<sup>®</sup>**

**Greater Strength, Less Cement**

[MEGASLAB.COM](https://www.megaslab.com)